

# Nebraska Wheat Crop Report

June 9, 2021

Sarah Ahrens  
402.471.2358  
sarah.ahrens@nebraska.gov

## USDA Crop Progress Report for the week ending June 6, 2021

Topsoil moisture supplies rated 3% very short, 20% short, 75% adequate, and 2% surplus. Subsoil moisture supplies rated 5% very short, 22% short, 70% adequate, and 3% surplus. Winter wheat condition rated 3% very poor, 9% poor, 32% fair, 46% good, and 10% excellent. Winter wheat headed was 79%, ahead of 63% last year, and near 77% average.

### Northern Panhandle

Producers in the northern panhandle reported no moisture in the past week. They have been experiencing temperatures in the 90's with high winds. The wheat is 80% headed. There have been no disease or pests reported. Overall, the condition of the wheat crop is in good shape though there is a need for rain.

Temperature Forecast - Alliance, NE							
June	10th	11th	12th	13th	14th	15th	16th
High	91	78	87	92	91	93	94
Low	52	50	58	58	61	61	60

- 4" soil moisture: 10-25%      - 20" soil moisture: 12-20%  
- 10" soil moisture: 7-20%      - 40" soil moisture: 5-17%

### Southern Panhandle

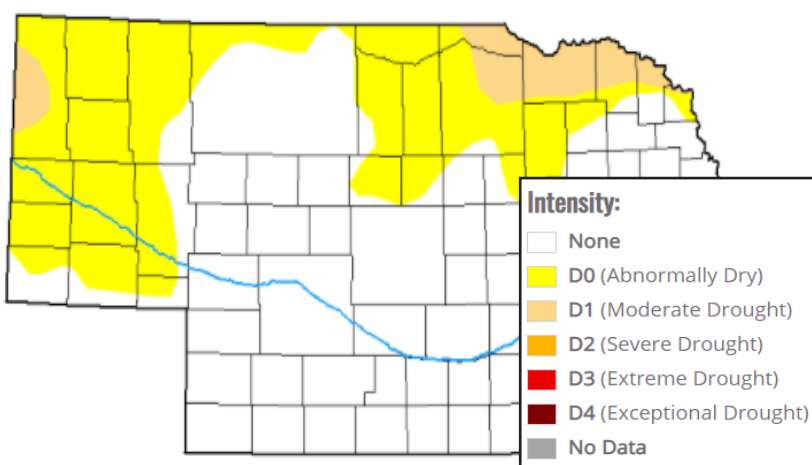
The southern panhandle reported a good wheat crop. With about 6" of moisture received within a week and a half, crop conditions have greatly improved from early spring. Fungicide has been applied to everything after reports of disease coming up from Kansas. The spring wheat is in good condition as it begins to head out. The difference in emergence times for the crop will result in a prolonged harvest in the region.

Temperature Forecast - Sidney, NE							
June	10th	11th	12th	13th	14th	15th	16th
High	89	78	87	92	89	92	92
Low	53	51	59	59	61	61	60

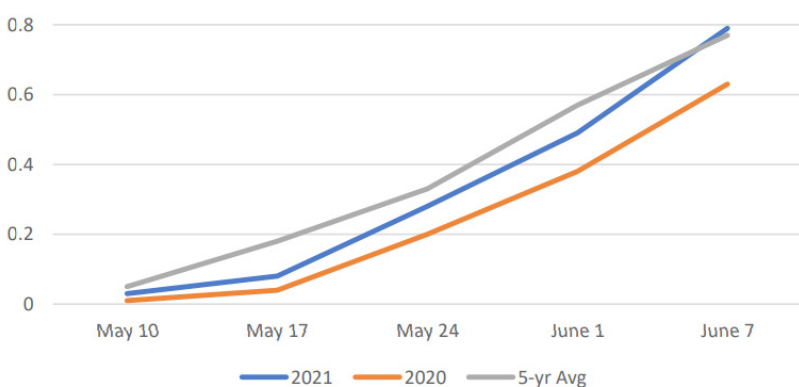
- 4" soil moisture: 3-26%      - 20" soil moisture: 7-29%  
- 10" soil moisture: 20-35%      - 40" soil moisture: 8-30%

## Nebraska Drought Monitor

Released: June 3, 2021



### Winter Wheat Headed



### Wheat field near Sidney, NE

### Southwest

Wheat in the southwest has significantly increased in condition over the course of the spring. The region received some much needed rain leaving the soil moisture in average condition. The region will be needing more rain throughout the season. Wheat in the area is about 80% headed. Harvest will be prolonged due to different emergence dates. Wheat stem sawfly has been spotted in the region.

Temperature Forecast - McCook, NE							
June	10th	11th	12th	13th	14th	15th	16th
High	93	84	88	92	92	92	92
Low	69	55	61	65	65	66	67

- 4" soil moisture: 16-34%      - 20" soil moisture: 14-32%  
- 10" soil moisture: 19-33%      - 40" soil moisture: 12-32%

### South Central

Rain received in the south central region of the state made a big difference on the condition of the wheat. Compared to previous years, the crop is a little behind, just going from the milk to soft dough stage. There has been minimal disease located in the area, but producers have taken precautions and applied fungicide.

Temperature Forecast - Kearney, NE							
June	10th	11th	12th	13th	14th	15th	16th
High	92	80	86	92	90	90	90
Low	70	56	60	64	63	66	67

- 4" soil moisture: 27-33%      - 20" soil moisture: 22-40%  
- 10" soil moisture: 29-37%      - 40" soil moisture: 28-40%

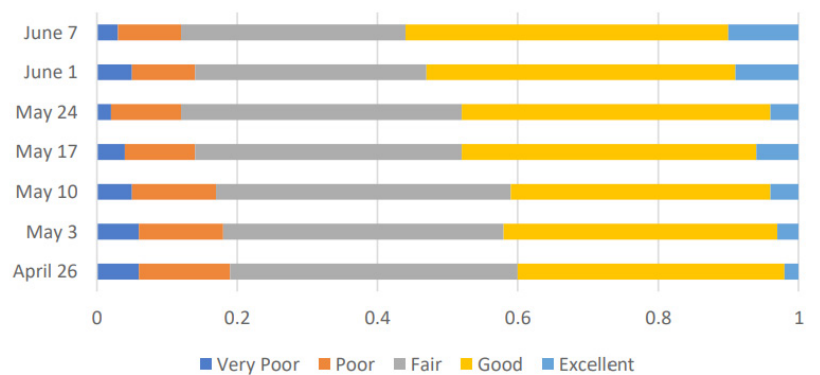
### Southeast

Producers in the southeast reported recent high temperatures and high winds, paired with a lack of moisture. The soil moisture is running low. The wheat has reached the end of milking and is in the early dough stage. Disease and pests seem to be holding off in the region with the applications of fungicide. Overall, the crop is still in good condition.

Temperature Forecast - Lincoln, NE							
June	10th	11th	12th	13th	14th	15th	16th
High	97	89	90	96	93	92	91
Low	74	64	63	66	64	66	68

- 4" soil moisture: 26-35%      - 20" soil moisture: 23-39%  
- 10" soil moisture: 22-39%      - 40" soil moisture: 29-37%

### Winter Wheat Condition



### Weekly Moisture

